

**A presentation for a
Visitors/Environmental Education Center
for
Lovers Key State Park,
Bonita Springs, Florida**







865

Estero Blvd

Lovers Key State Park

Estero Bay

Estero Blvd



**2015 Park attendance
was 1,026,456
Florida's second most
visited State Park**



2.5 Miles of Beach

8 Miles of Nature Trails





2015 Park Revenues


\$951,564



**In 2015
Loves Key State Park
had
95 Volunteers
Donating a Total of
14,604 hours**



**In 2015
the Park Generated
1,423
Full Time Regional Jobs**



**2016 Park
Estimated Revenues
\$984,868**



**In 2015
Lovers Key State Park
Employed**

10

**Full Time Staff
*same as in 2014***



**2015 Park
Economic Impact
\$88,931,157**

The 3600 s.f. LEED Certified building and its state of the art exhibits will be owned by the Park Service and staffed by volunteers. A much needed indoor facility; it will inspire students, visitors and the community to learn the importance of stewardship of our barrier island environment.



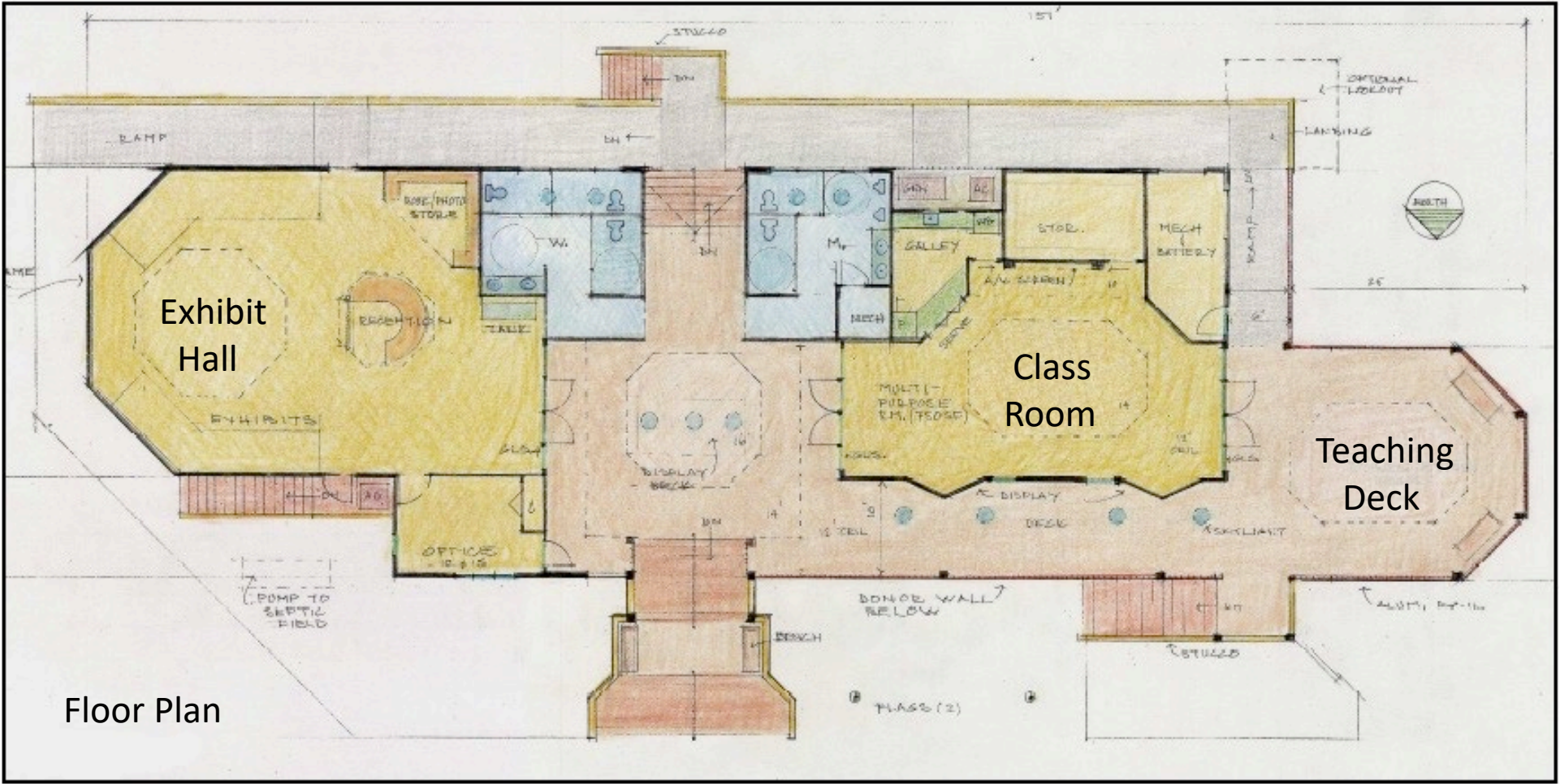


Front Elevation



Rear Elevation

Lovers Key Environmental Education Center



Floor Plan



LOVERS KEY WELCOME & DISCOVERY CENTER
JANUARY 15, 2021









LOVERS KEY WELCOME & DISCOVERY CENTER
JANUARY 15, 2021



LOVERS KEY WELCOME & DISCOVERY CENTER
JANUARY 15, 2021













LOVERS KEY WELCOME & DISCOVERY CENTER
JANUARY 15, 2021